

FTB-7400E Metro/OTDR

METRO/CORE NETWORK FIBER CHARACTERIZATION



EXFO Connect
Compatible

40G

iOLM
READY



High-resolution OTDR covering longer metro distances networks

KEY FEATURES

Industry-leading linearity of ± 0.03 dB/dB

Up to 256 000 sampling points

Event dead zone of 0.8 m and attenuation dead zone of 4 m

Low-water-peak fiber testing at 1383 nm

Dynamic range of up to 42 dB for long-haul testing

EXFO Connect-compatible: automated asset management; data goes through the cloud and into a dynamic database

iOLM-ready: one-touch multiple acquisitions, with clear go/no-go results presented in a straightforward visual format

APPLICATIONS

Metro/core network testing

RELATED PRODUCTS AND OPTIONS



Platform
FTB-2/FTB-2 Pro



Platform
FTB-500



Fiber Inspection Probe
FIP-400B



Data Post-Processing Software
FastReporter 2

EXFO

LOADED WITH FEATURES TO BOOST YOUR EFFICIENCY



Real-time averaging

Activates the OTDR laser in continuous shooting mode, the trace refreshes in real time and allows monitoring of the fiber for a sudden change. Perfect for a quick overview of the fiber under test.



Automode

Used as a discovery mode, this feature automatically adjusts the distance range and the pulse width in function with the link under test. Adjusting the parameters is recommended in order to perform additional measurements to locate other events.



Zoom tools

Zoom and center to facilitate the analysis of your fibers. Draw a window around the area of interest and center in on the screen quicker.



Set parameters on the fly

Dynamically change OTDR settings for the ongoing acquisition without stopping or returning to submenus.



Macro bend finder

This built-in feature enables the unit to automatically locate and identify macrobends; no need to spend further time analyzing the traces.



Bidirectional analysis (via FastReporter 2 Data Post-Processing software)

Recommended to ensure true splice characterization, bidirectional analysis combines results from both directions to provide an average loss for each event. For a more complete event characterization, use intelligent Optical Link Mapper (iOLM) and benefit from maximum resolution on both directions (multiple pulse widths at multiple wavelengths), as well as a consolidated view.



Data center cable certification (iCERT^a)

The iCERT option turns the iOLM into an intelligent Tier 2 certifier with automated pass/fail thresholds for SM/MM cables, helping fiber installers to certify or troubleshoot any enterprise or data center network according to the recognized international standards (including TIA-568, ISO 11801).

Note

a. This software option is only available if you select the iOLM or Oi application.

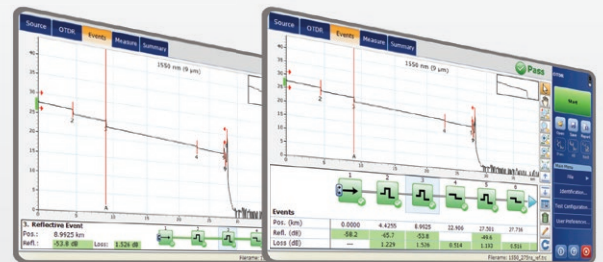
LOOKING FOR ICON-BASED MAPPING?

Linear View (Included on All EXFO OTDRs)

Available on our OTDRs since 2006, the linear view simplifies the reading of an OTDR trace by displaying icons in a linear way for each wavelength. This view converts the graph data points obtained from a traditional single pulse trace into reflective or non-reflective icons. With applied pass/fail thresholds, it becomes easier to pinpoint faults on your link.

This improved version of linear view provides the flexibility to display both the OTDR graph and its linear view without having to toggle to analyze your fiber link.

Although this linear view simplifies the OTDR reading of a single pulse width's trace, the user will still need to set the OTDR parameters. In addition, multiple traces must often be performed in order to fully characterize the fiber links. See the section below to learn how the iOLM performs this automatically and with more accurate results.



IOLM—REMOVING THE COMPLEXITY FROM OTDR TESTING

OTDR TESTING COMES WITH ITS SHARE OF CHALLENGES...



WRONG OTDR TRACES



COUNTLESS TRACES TO ANALYZE



REPEATING THE SAME JOB TWICE



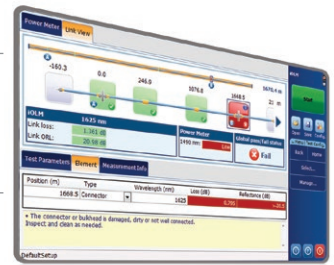
COMPLEX INSTRUMENT TRAINING/SUPPORT

iOLM | intelligent Optical Link Mapper

In response to these challenges, EXFO developed a better way to test fiber optics:

The iOLM is an OTDR-based application designed to simplify OTDR testing by eliminating the need to configure parameters, and/or analyze and interpret multiple complex OTDR traces. Its advanced algorithms dynamically define the testing parameters, as well as the number of acquisitions that best fit the network under test. By correlating multipulse widths on multiple wavelengths, the iOLM locates and identifies faults with maximum resolution—all at the push of a single button.

HOW DOES IT WORK?



Turning traditional OTDR testing into clear, automated, first-time-right results for technicians of any skill level.

Patent protection applies to the iOLM, including its proprietary measurement software. EXFO's Universal Interface is protected by US patent 6,612,750.

THREE WAYS TO BENEFIT FROM THE iOLM

COMBO



Run both iOLM and OTDR applications (Oi code)

UPGRADE



Add the iOLM software option to your iOLM-ready unit, even while in the field

iOLM ONLY



Order a unit with the iOLM application only

iOLM FEATURES VALUE PACK

In addition to the standard iOLM feature set, you can select added-value features as part of the **Advanced** or **Pro** packages. Please refer to the iOLM specification sheet for the complete and most recent description of these value packs.

SOFTWARE APPLICATIONS



ONE SOFTWARE DOES IT ALL

This powerful reporting software is the perfect complement to your OTDR. It allows for the creation and customization of reports to fully address your needs.



FIBER CONNECTOR INSPECTION AND CERTIFICATION—THE ESSENTIAL FIRST STEP BEFORE ANY OTDR TESTING



ConnectMax2

Taking the time to properly inspect a fiber-optic connector using an EXFO fiber inspection probe can prevent a host of issues from arising further down the line, thus saving you time, money and trouble. Moreover, using a fully automated solution with autofocus capabilities will turn this critical inspection phase into a fast and hassle-free one-step process.

DID YOU KNOW THAT YOUR OTDR/iOLM CONNECTOR IS ALSO CRITICAL?

The presence of a dirty connector at an OTDR port or launch cable can negatively impact your test results and even cause permanent damage during mating. Therefore, it is critical to regularly inspect these connectors to ensure that they are free of any contamination. Making inspection the first step of your OTDR best practices will maximize your OTDR's performance and your efficiency.

FIVE MODELS TO FIT YOUR BUDGET

FEATURES	USB WIRED		
	Basic FIP-410B	Semi-Automated FIP-420B	Fully-Automated FIP-430B
Three magnification levels	✓	✓	✓
Image capture	✓	✓	✓
Five-megapixel CMOS capturing device	✓	✓	✓
Automatic fiber image-centering function	X	✓	✓
Automatic focus adjustment	X	X	✓
Onboard pass/fail analysis	X	✓	✓
Pass/fail LED indicator	X	✓	✓

For additional information, please refer to the FIP-400B USB specification sheet.

AUTOMATE ASSET MANAGEMENT. PUSH TEST DATA IN THE CLOUD. GET CONNECTED.

EXFO | Connect

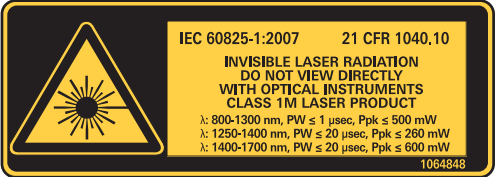
EXFO Connect pushes and stores test equipment and test-data content automatically in the cloud, allowing you to streamline test operation from build-out to maintenance.

All specifications valid at 23 °C ± 2 °C with an FC/APC connector, unless otherwise specified.

TECHNICAL SPECIFICATIONS	
Wavelengths (nm) ^a	1310 ± 20/1383 ± 2/1550 ± 20/1625 ± 10
Dynamic range at 20 ms (dB) ^b	42/40/41/41
Event dead zone (m) ^c	0.8
Attenuation dead zone (m) ^c	3
Distance range (km)	1.25 to 400
Pulse width (ns)	5 to 20 000
Linearity (dB/dB) ^a	±0.03
Loss threshold (dB)	0.01
Loss resolution (dB)	0.001
Sampling resolution (m)	0.04 to 5
Sampling points	Up to 256 000
Distance uncertainty (m) ^d	±(0.75 + 0.001 % x distance + sampling resolution)
Measurement time	User-defined (minimum: 5 seconds; maximum: 60 minutes)
Typical real-time refresh (Hz)	4
Stable source output power (dBm) ^e	-4.5 (7400E-0023B)

GENERAL SPECIFICATIONS	
Size (H x W x D)	97 mm x 25 mm x 260 mm (3 13/16 in x 1 in x 10 1/4 in)
Weight	0.55 kg (1.2 lb)
Temperature	operating 0 °C to 50 °C (32 °F to 122 °F) storage -40 °C to 70 °C (-40 °F to 158 °F)
Relative humidity	0 % to 95 % non-condensing

LASER SAFETY



IEC 60825-1:2007 21 CFR 1040.10

INVISIBLE LASER RADIATION
DO NOT VIEW DIRECTLY
WITH OPTICAL INSTRUMENTS
CLASS 1M LASER PRODUCT

λ: 800-1300 nm, PW ≤ 1 μsec, Ppk ≤ 500 mW
λ: 1250-1400 nm, PW ≤ 20 μsec, Ppk ≤ 260 mW
λ: 1400-1700 nm, PW ≤ 20 μsec, Ppk ≤ 600 mW

1084848

Notes

- a. Typical.
- b. Typical dynamic range with a 3-minute averaging at SNR = 1.
- c. Typical dead zone at 1310 nm for reflectance at -55 dB using a 5-ns pulse.
- d. Does not include uncertainty due to fiber index.
- e. Typical output power value at 1550 nm.

ORDERING INFORMATION

FTB-7400E-XX-XX-XX-XX-XX

Model**Dual Wavelength**

0023B = SM OTDR module, 1310/1550 nm (9/125 µm)

Triple Wavelength

0234B = SM OTDR module, 1310/1550/1625 nm (9/125 µm)

Quadruple Wavelength

2347B = SM OTDR module, 1310/1383/1550/1625 nm (9/125 µm)

Base Software

OTDR = Enables the OTDR application only

iOLM = Enables the iOLM application only^aOi = Enables iOLM and OTDR applications^a**iOLM Software Option**

00 = iOLM Standard

iADV = iOLM Advanced^biPRO = iOLM Pro^b**OTDR Software Option**00 = Without software option^cAD = Macrobend finder and linear view^d**Connector**

EA-EUI-28 = APC/DIN 47256

EA-EUI-89 = APC/FC narrow key

EA-EUI-91 = APC/SC

EA-EUI-95 = APC/E-2000

EA-EUI-98 = APC/LC

EI Connectors: See section below

Example: FTB-7400E-2347B-Oi-EI-EUI-89-AD

Notes

a. iOLM application is not available for 1383 nm.

b. The features available in iOLM Advanced and Pro depend on the platform and the module. Please refer to the intelligent Optical Link Mapper (iOLM) specification sheet for package details.

c. Includes macrobend finder and linear view in FTB-2/FTB-2 Pro.

d. Included in FTB-200. Not available in FTB-2/FTB-2 Pro.

EI CONNECTORS



To maximize your OTDR performance, EXFO recommends using APC connectors on singlemode port. These connectors generate lower reflectance, which is a critical parameter that affects performance, particularly in dead zones. APC connectors provide better performance than UPC connectors, thereby improving testing efficiency.

For best results, APC connectors are mandatory with the iOLM application.

Note: UPC connectors are also available. Simply replace EA-XX by EI-XX in the ordering part number. Additional connector available: EI-EUI-90 (UPC/ST).

EXFO Headquarters > Tel.: +1 418 683-0211 | Toll-free: +1 800 663-3936 (USA and Canada) | Fax: +1 418 683-2170 | info@EXFO.com | www.EXFO.com

EXFO serves over 2000 customers in more than 100 countries. To find your local office contact details, please go to www.EXFO.com/contact.

EXFO is certified ISO 9001 and attests to the quality of these products. EXFO has made every effort to ensure that the information contained in this specification sheet is accurate. However, we accept no responsibility for any errors or omissions, and we reserve the right to modify design, characteristics and products at any time without obligation. Units of measurement in this document conform to SI standards and practices. In addition, all of EXFO's manufactured products are compliant with the European Union's WEEE directive. For more information, please visit www.EXFO.com/recycle. Contact EXFO for prices and availability or to obtain the phone number of your local EXFO distributor.

For the most recent version of this spec sheet, please go to the EXFO website at www.EXFO.com/specs.

In case of discrepancy, the web version takes precedence over any printed literature.